



Air Pen Marking Machine

VM2020

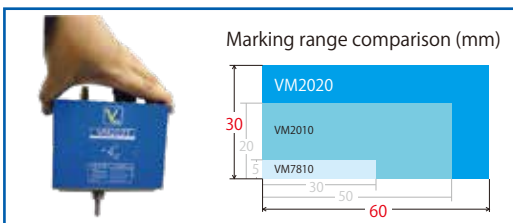
Air Pen Marking Machine

VM2020



*Marking Stand (a mount for the marking machine) is sold separately

VM2020 Air Pen Marking Machine delivers semi-permanent marking on a wide range of metals, including steel, stainless-steel and aluminum, as well as plastics and other nonmetallic metals. It is designed to handle marking needs for production management, quality assurance, product-liability countermeasures, ISO measures, distribution management and more.



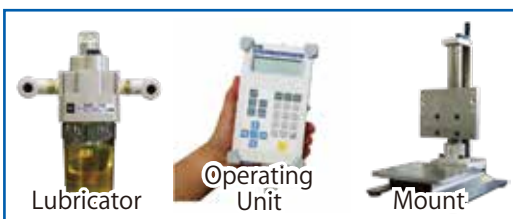
Compact body size & Wide marking range

VM2020 achieves both compact body size (VM2021- Weight:1.6kg, Dimensions: 145×114.5×102.5mm) and wide marking range (60×30mm).



2D code marking as a standard function

2D code marking (DataMatrix, QR Code and Micro QR Code) is available as standard a function. This will be helpful for constructing new production management system.



Various options and extentions

We prepare not only main bodies of making machine, but many optional units such as handy operating unit (VM1891), styli of various angle, mounts, etc. Also, commercial lubricators are available for VM2020.



Air Pen Marking Machine VM2020

Specifications

Pen type	Air Pen
Marking range (X×Y)	60 × 30 mm
Pen stroke	Approx.9.5mm (Z-axis Marking Range: 5mm)
Marking speed	100~4000mm/min (in increments 100mm/min)
Available characters	Alphabet Uppercase 26 types Lowercase 26 types Symbol 18 types Number 10 types
Character size (=height)	1~30 mm (in increments 0.1mm)
Font	3 types (Vector's original font)
Job registered number (J No.)	255 jobs (J1~J255)
Sequence registered number (S No.)	255 sequences (S1~S255)
String length	1~36 characters
Marking function	
- Increment	1~10 digits
- Calendar	Year. Month. Day. Hour. Minute. Second (E.g. 11. 02. 28. 12. 10. 16)
- Circular arc marking	Available
- 2D code	DataMatrix, QR Code, Micro QR Code
- Special character	Supported (by updating font ROM)
Interface	I/O (Parallel): 50pin, NPN/PNP connect RS- 232C (Serial): 9pin USB (for operation by PC): USB B
Power supply	Single-phase AC100V~230V ± 10% 50 / 60 Hz, approx. 80VA
Air supply	0.3~0.5MPa, 40 L / min (A.N.R.) *1 Dry clean air (below atmospheric dew point -17°C)
Environmental Condition	Operating temperature: 0~40 °C Storage temperature: -5 ~ +50 °C Relative humidity: 90%RH or less (no condensation)
Dimensions (W×H×D)	Mechanical Unit: approx. 145 × 114.5 × 102.5 mm *2 Control Unit: approx. 297 × 75 × 210 mm *3
Weight	Mechanical Unit: approx. 1.6Kg Control Unit: approx. 2.0kg
Mounting orientation	Mechanical Unit: Gravity direction~horizontal direction Control Unit: Vertical/Horizontal layout
Structure	Mechanical Unit - Control Unit separate type
Option	VM7884 Air Supply Unit VM7834 Marking Stand (Mount) VM7889 Adapter for Marking Stand VM1891 Operating Unit
Accessories	- Application Software (for Windows XP/7/8/8.1/10, CD-ROM) *4 - Manual

*1 The rate varies according to character size, font and marking speed settings. For details, please consult our sales department.

*2 Pen units and connectors are not included.

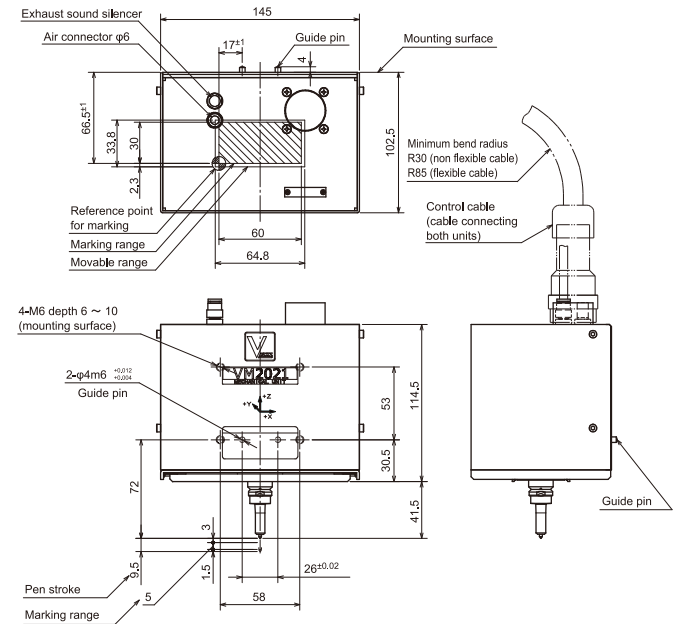
*3 Connectors are not included.

■ Specifications and design are subject to modify without notice.

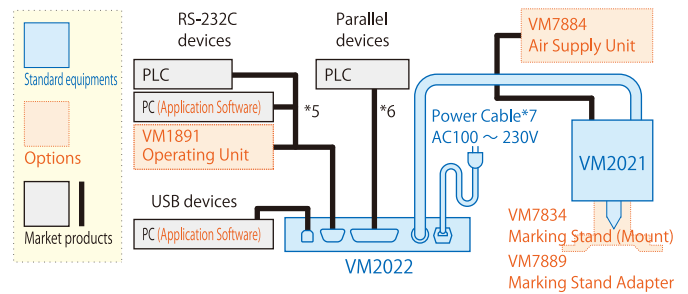
■ This product (incl. technologies) is a target of catch-all controls. Export of this product out of Japan may require permission of minister of economy, trade and industry pursuant to foreign exchange law.

■ According to usage conditions, the noise generated from the machine may exceed 80dB. It is recommended to use earplugs if necessary.

External Dimensions (Unit: mm)

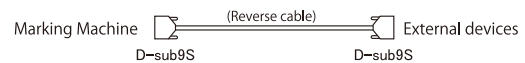


Block Diagram

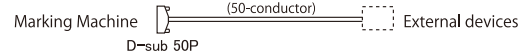


*4 Windows XP, Windows 7, Windows 8, Windows 8.1 and Windows 10 are either registered trademarks of Microsoft Corporation in United States and other countries.

*5 Spec. of serial (RS-232C) cable is as follows.
Vector's VM7872 Cable (5m) meets the specifications.



*6 Spec. of parallel (I/O) cable is as follows.
Vector's VM8679 Cable (5m) meets the specifications.



*7 Attached power cable is available in Japan only.
To use the marking machine out of Japan, please use the compatible cable.



Vector Co., Ltd.

<https://www.vecc.jp>

HEAD OFFICE
2-12-16, Ekiminami, Kosai, Shizuoka, 431-0427,
Japan
TEL : +81-53-573-3838 FAX : +81-53-577-0118