



Electromagnetic Pen Marking Machine

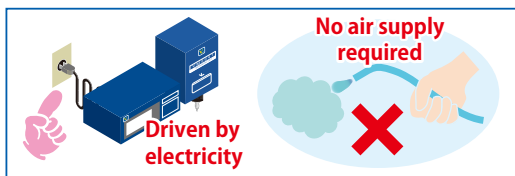
# VM6040

## Electromagnetic Pen Marking Machine

# VM6040

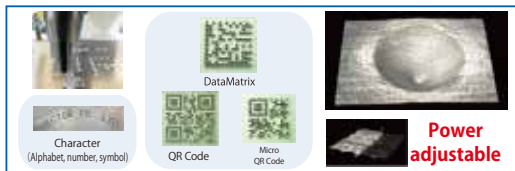


VM6040 Electromagnetic Pen Marking Machine delivers semi-permanent marking on a wide range of metals, including steel, stainless-steel and aluminum, as well as plastics and other nonmetallic metals. It is designed to handle marking needs for production management, quality assurance, product-liability countermeasures, ISO measures, distribution management and more.



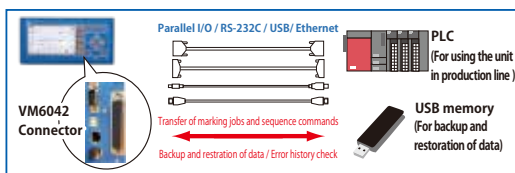
### Easy to install

The stylus is vibrated by electromagnetic power. Air supply is not required for operation. Only electric power source is required. (\* If the pen unit become too hot due to high-power or continuous operation , use air supply for cooling the unit.)



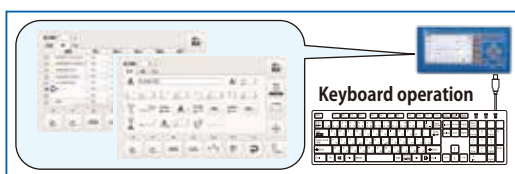
### Marking power adjustable

The power of marking can be adjusted in fourteen levels. Regardless of workpiece hardness, users can mark characters and 2D codes in 60x60mm area with desired depth.



### Interfaces (Parallel I/O, RS-232, USB, Ethernet)

Control Unit equips four kinds of external ports (Parallel I/O, RS-232C, USB and Ethernet), useful for operation in production lines, making backup data, etc.



### User-friendly display on Control Unit

Color LCD panel on Control Unit shows preview of marking , marking history, error history, etc. Users can set marking jobs and sequence commands by keyboard operation without using external PC.



## Specifications

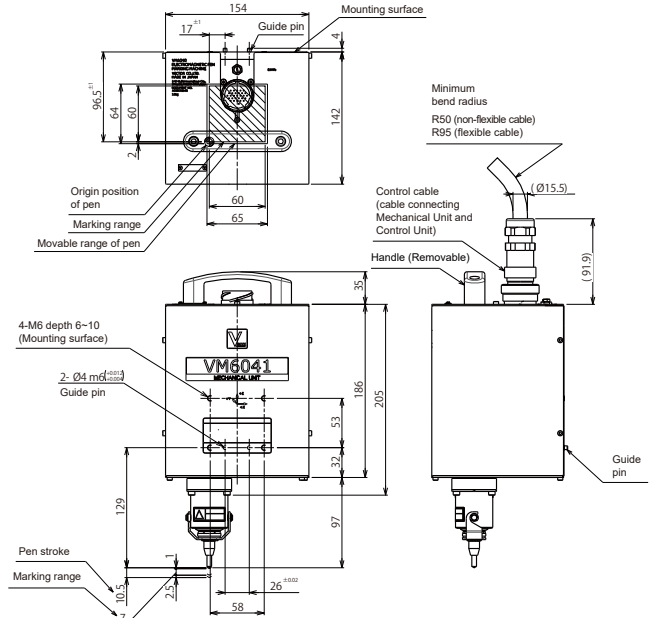
|                                      |   |   |          |
|--------------------------------------|---|---|----------|
| Pen type                             | Electromagnetic Pen   |   |          |
| Marking range (X×Y)                  | 60 × 60 mm  |   |          |
| Pen stroke                           | Approx.10.5mm (Z-axis Marking Range: 7mm)   |   |          |
| Marking speed                        | 100~5000mm/min (in increments 100mm/min)  |   |          |
| Available characters                 | Alphabet  | Uppercase   | 26 types |
|                                      |   | Lowercase   | 26 types |
|                                      | Symbol  |   | 18 types |
|                                      | Number  |   | 10 types |
| Character size (=height)             | 1~60 mm (in increments 0.1mm)   |   |          |
| Font                                 | 1 type (Vector's original font)   |   |          |
| Job registered number (J No.)        | 999 jobs (J1~J999)  |   |          |
| Sequence registered number (S No.)   | 999 sequences (S1~S999)   |   |          |
| String length                        | 1~99 characters   |   |          |
| Marking function                     | - Increment   | 1~10 digits / Periodical reset  |          |
|                                      | - Calendar  | Year. Month. Day. Hour. Minute. Second<br>(E.g. 11. 02. 28. 12. 10. 16)   |          |
|                                      | - Circular arc marking / Angular marking  | Available   |          |
|                                      | - 2D code   | DataMatrix, QR Code, Micro QR Code  |          |
|                                      | - Special character   | Supported   |          |
|                                      | Interface   | I/O (Parallel): 50pin, NPN/PNP connect<br>RS- 232C (Serial): 9pin<br>USB : USB 2.0 (Type-A) × 3, USB 2.0 (Type B) × 1<br>Ethernet: 100BASE-TX × 1 |          |
| Power supply                         | Single-phase AC100V~230V ± 10%<br>50 / 60 Hz, approx. 720VA   |   |          |
| Air supply (for cooling pen unit) *1 | 0.1MPa, 35L / min (A.N.R.) *1<br>Dry clean air (below atmospheric dew point -17°C)                                      |   |          |
| Environmental Condition              | Operating temperature: 0~40 °C<br>Storage temperature: -5 ~ 50 °C<br>Relative humidity: 90%RH or less (no condensation) |   |          |
| Dimensions (W×H×D)                   | Mechanical Unit: approx. 154×205×142 mm *2<br>Control Unit: approx. 297×155×235mm *3                                    |   |          |
| Weight                               | Mechanical Unit: approx. 5.0Kg<br>Control Unit: approx. 4.3kg   |   |          |
| Mounting orientation                 | Mechanical Unit: Gravity direction~horizontal direction<br>Control Unit: Horizontal layout                              |   |          |
| Structure                            | Mechanical Unit - Control Unit separate type  |   |          |
| Option                               | Marking Stand (Mount)   |   |          |
| Accessories                          | - Keyboard  |   |          |
|                                      | - Manual  |   |          |

- \*1 Air supply is not necessary for normal use. If the pen unit become too hot due to high-power or continuous operation , use air supply for cooling the unit.
- \*2 Pen units and connectors are not included.
- \*3 Connectors are not included.

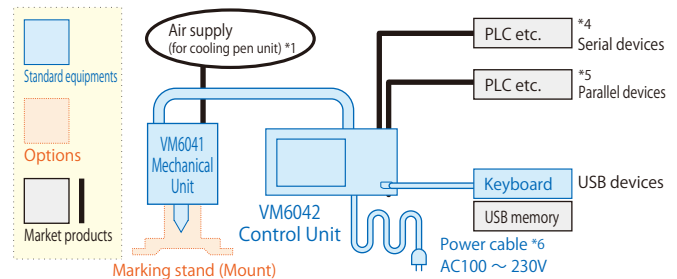
■ Specifications and design are subject to modify without notice.  
 ■ This product (incl. technologies) is a target of catch-all controls. Export of this product out of Japan may require permission of minister of economy, trade and industry pursuant to foreign exchange law.

## External Dimensions (Unit: mm)

### VM6041 Mechanical Unit

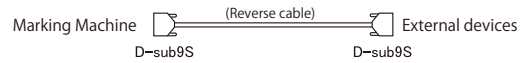


## Block Diagram



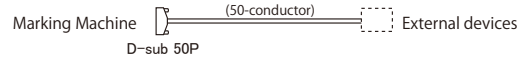
\*4 Spec. of serial (RS-232C) cable is as follows.

Vector's VM7872 Cable (5m) meets the specifications.



\*5 Spec. of parallel (I/O) cable is as follows.

Vector's VM8679 Cable (5m) meets the specifications.



\*6 Attached power cable is available in Japan only.

To use the marking machine out of Japan, please use the compatible cable.



Vector Co., Ltd.  
<https://www.vec.jp>

HEAD OFFICE:  
 2-12-16, Eki-minami, Kosai-shi, Shizuoka,  
 431-0427, Japan  
 TEL: +81-53-573-3838 FAX: +81-53-577-0118